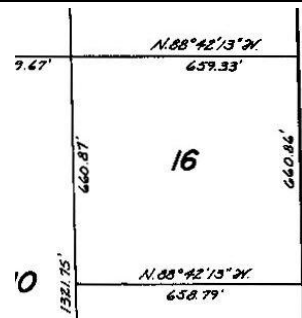




Overhead Monthly costs

Water: \$30 (without sprinklers)
 Heat / Propane: \$84
 Electric: \$37 (w/o AC)
 Garbage: \$18.50
 Winter: Add for electric heated waterers; Add snow plow costs
 Heat, Water Heater, Dryer and Range are Propane





From All Country Store (milemark 62) go 2.4 miles East to 42700 West, Turn South

Follow road south 1.1 miles, turn East (left), then .8 miles to the end of the road. Property is on the left (North)



Horse Healthy

Family Fabulous - Pet Perfect

\$242,000



No Doubt About It!

First Class Property

Year-Round in a protected Cove

10 acres with 3 acres chain-link fenced

Home built in 2007, Open floor-plan, 3 bed 2 bath, Whirlpool tub, Stainless steel gas appliances, knotty alder cabinets, east-facing covered deck, Log Siding, Metal Roof, 200 AMP electrical, 50 gal gas water heater, furnace gas,

Cedar Lap accent walls,

Large RV parking with separate septic

RV Deck adjacent

Two horse paddocks w/shelter, large pasture

Heated horse waterers

THUNDER RIDGE REAL ESTATE

435-828-8824

www.StretchYourDream.com